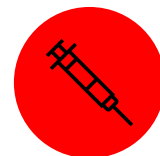
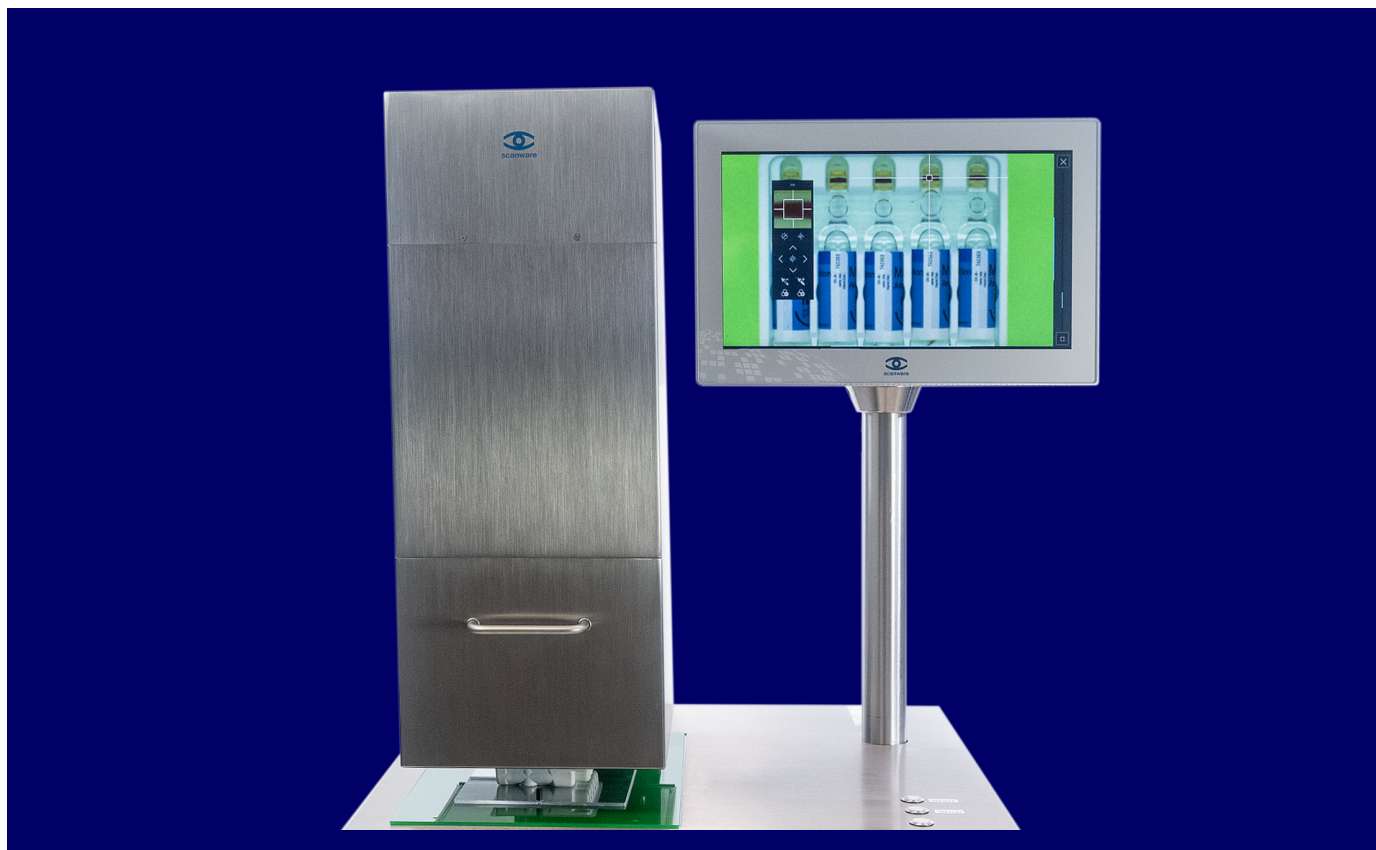



Packaging Inspection



# PATERA CL **QI** Colour Parenterals Inspection



PATERA CL  **QI** inspects the packaging of pharmaceutical products intended for administration bypassing the intestinal tract, such as ampoules, vials, syringes and carpules. The purpose of the system is to detect incorrect products and to prevent cross-contamination.

## PRODUCT HIGHLIGHTS

### 5 Megapixels

resolution



Large product  
variety

### Low Contrast

inspection

Any questions?



+49 6257 9352 0



info@scanware.de



scanware.de



## DESCRIPTION

- Criteria: Presence, colour, size, shape, perimeter, position and measurement of object distances, broken product, incomplete product
- Handling via a multi-touch display is highly intuitive and allows gesture recognition
- Teach-in is very effective and therefore enables quick product changeovers
- Software enables format tests and re-teaching
- Ideal for unique products and mixed product packaging



## APPLICABLE OBJECTS



Ampoule



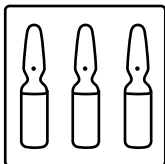
Vial



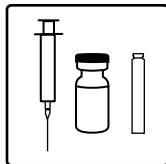
Carpoule



Syringe



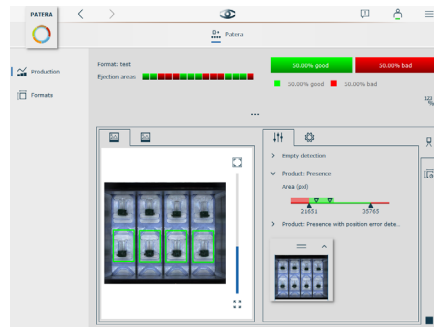
Product in tray



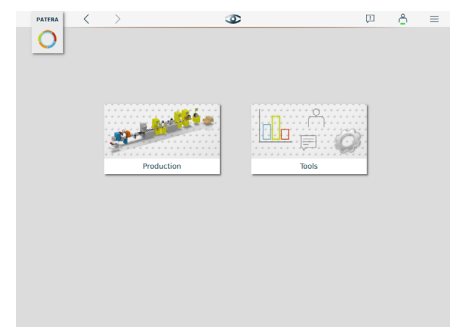
Mixed tray

## ON SITE

After installation, the system is ready for immediate use. Furthermore, the fast teach-in allows for very quick changeovers on the line.



Very efficient teach-in allows a quick start of production



Handling via a multi-touch display is highly intuitive and allows gesture recognition

## SCANWARE HIGHLIGHTS



Highest security  
& failure-safety



Partnership  
& Trust



In-house  
development



Customisable  
to optimise  
productivity



User-friendly  
& intuitive

