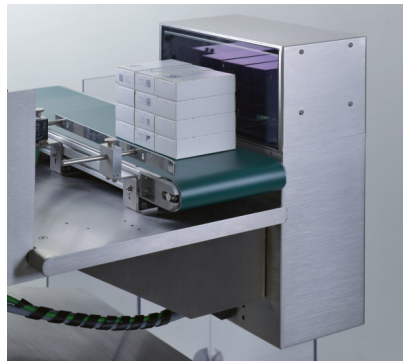


TRACK & TRACE

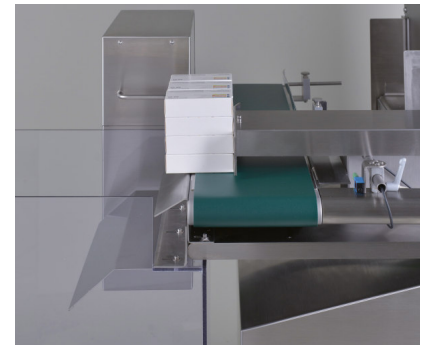


CAPA Bundle (BI)

Description

The systems of the **CAPA** series are designed for the packaging process for track & trace applications. The station **CAPA Bundle** inspects folding boxes that have been combined into a bundle. Inspection of individual folding boxes is also possible. For the bundle inspection, area scan cameras of the **SIGNUM Codes** system are used to check 1D and 2D codes for readability and bundle completeness.

Aggregation and serialisation of the data can be implemented using the **IMPERA Line Management** system by scanware.



Area of Application

Applicable Objects:

- Bundles
- Single folding boxes (if required)

Inspection Criteria:

- Readability of 1D and 2D codes
e.g. Code 128 and DataMatrix
- Completeness of bundles

Highlights

- Different control positions possible (top, front and back)
- High camera resolution for optimal results
- Common user interface, comprehensible menu navigation and convenient data entry
- Suitable for serialisation in conjunction with additional components
- Aggregation possible
- **IMPERA Line Management** system provides for efficient data exchange
- Precise bundle handling
- Modular, robust, mobile and ergonomic design
- Compact add-on solution for easy integration into existing systems
- Easy to clean stainless steel housing
- Brushless motors for wearless drives
- High-quality norm components enable an efficient spare parts supply
- System manufacture to customer-specific requirements

■ System

Camera

Depending on the size of the composites to be inspected, cameras with up to 29 mega pixels are used, which are equipped with SMD W-LED lighting. The area scan camera can be installed by scanware in three different positions - top, front or back. Where the camera is installed above, its height can be adjusted mechanically. This enables adjusting the image acquisition area to the bundle size.

Illumination

The illumination used in the **CAPA Bundle** is integrated in the housing of the station. It is adjustable in 16 brightness levels. The illumination set for a format is stored in the format data record and is therefore reproducible.

Construction

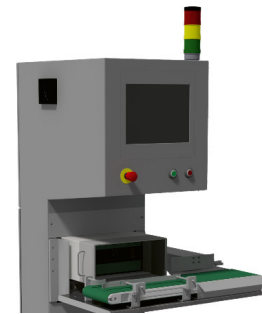
CAPA Bundle is equipped with a conveyor band (200 mm width) to guide the bundles along the installed camera. A pneumatic ejection system allows the bundle to be ejected when a fault is detected. A guide rail has been installed to guarantee that the bundles are guided in the correct position. This is also used for adjusting the format without tools (adjustable according to the bundle size).



Inspection from above



Inspection from the front



Inspection from the back

■ Quality is visible.

- Modular build for a multitude of installation options
- Real-time operating system QNX® for security and speed
- Uniform graphical interface and easy-to-follow menu structure
- Hard- and software are expandable and upgradable
- Fully 21 CFR Part 11 compliant
- Wear-free, electronically controllable scanware W-LED illumination
- Easy to install on all common packaging machinery
- Communication with machine via a VDMA XML_P or OPC UA protocol
- Simultaneous use of numerous inspection parameters
- Variety of statistical tools
- Development of special tasks and requirements on your request
- Availability of all parts guaranteed for 10 years
- Service offering solutions and support within 24 hours



Management



Packaging



Blister & Products



Codes, Text & Graphics



Track & Trace



Support



scanware



scanware electronic GmbH

Darmstädter Straße 9-11
D-64404 Bickenbach
Telephone +49 6257 9352-0 Fax -22
info@scanware.de
www.scanware.de

International partners:

Belgium | Brazil | Canada | China | Croatia | Denmark | Egypt | Finland
France | Great Britain | Greece | Hungary | India | Ireland | Mexico
Netherlands | Norway | Poland | Portugal | Puerto Rico | Romania
Serbia | Slovakia | Slovenia | Spain | South Korea | Sweden | Switzerland
United States