

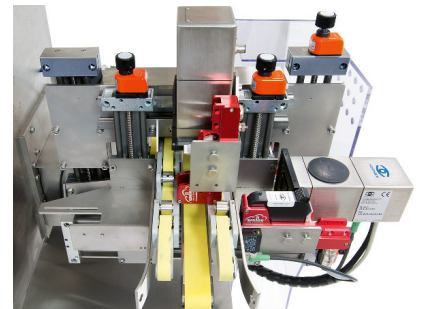
TRACK & TRACE



CAPA Mark & Verify (MV)

Description

The systems of the **CAPA** product family are designed for the packaging process compliant with Track & Trace requirements. At the station **CAPA Mark & Verify**, units are marked with production-specific data and the print is verified. The processing and aggregation of serialised data is handled by **IMPERA Line Management**.



Area of Application

Applicable Objects:

- Folding boxes

Inspection Criteria:

- 1D and 2D codes e. g. Code 128 and DataMatrix
- Plain text e. g. lot, expiry date, GTIN and serial numbers



Highlights

- Serialisation supported
- Fast evaluation results irrespective of the number of taught character patterns
- High-precision placement of print thanks to precise folding box guidance and ideal use of sensors
- Tool-free adjustment to folding box size
- Integration of major printer systems
- Supports GS1, IFA, CIP 13, ITS, Bollini IPZS, Royal Vignette Belge and China E-Coding
- Uniform user interface, easy to follow menu and comfortable data input
- In-house development of control and print inspection system
- Movable, modular, robust and ergonomic design
- High-quality standardised parts allow an efficient supply of spare parts
- Excellent power transmission utilising planetary gears
- Implementation of brushless motors
- Stainless steel housing to protect the station

■ System

Construction

CAPA Mark & Verify is available with a fixed or an adjustable height of folding box feed. Its range is 800 to 1,050mm, with other heights available upon request.

Units of up to 300 g are ejected via compressed air. For heavier units or fragile objects an ejection turnout is used which moves units with faulty print onto a conveyor.

Tool-free adjustment to individual folding box size is possible.

The machine control of all components is performed by a PLC. Visualisation takes place on the scanware GUI.

Sensors

The product sensor triggers printer, camera shot, ejection and length measurement of the box. The print position on the box is variable and can be adjusted electronically.

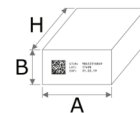
Another sensor monitors the good product lane in order to verify rejection.

When integrated into an existing line linkage to the machines before and after is possible.

Printing

Precise printing due to folding box guidance from both sides. Compatible to printers by Wolke, REA, Bluhm and Domino. Other printers, e.g. DoD can be implemented upon request. Printing on top of box is optional.

The station **CAPA Mark & Verify** can be complemented by our station **CAPA Tamper Evidence** for tamper-proof sealing of folded boxes. It is also available as installation in cartoners and checkweighers.



Maximum standard sizes of folding boxes:
A = 15 – 220 mm, B = 20 – 120 mm, H = 60 – 220 mm
Larger boxes possible on request.
300 folding boxes per minute with a transport interval of 50 mm can be processed.

■ Quality is visible.

- Modular build for a multitude of installation options
- Real-time operating system QNX® for security and speed
- Uniform graphical interface and easy-to-follow menu structure
- Hard- and software are expandable and upgradable
- Fully 21 CFR Part 11 compliant
- Wear-free, electronically controllable scanware W-LED illumination
- Easy to install on all common packaging machinery
- Communication with machine via a VDMAXML_P or OPC UA protocol
- Simultaneous use of numerous inspection parameters
- Variety of statistical tools
- Development of special tasks and requirements on your request
- Availability of all parts guaranteed for 10 years
- Service offering solutions and support within 24 hours



Management



Packaging



Blister & Products



Codes, Text & Graphics



Track & Trace



Support



scanware



scanware electronic GmbH

Darmstädter Straße 9-11

D-64404 Bickenbach

Telephone +49 6257 9352-0 Fax -22

info@scanware.de

www.scanware.de

International partners:

Belgium | Brazil | Canada | China | Croatia | Denmark | Egypt | Finland

France | Great Britain | Greece | Hungary | India | Ireland | Mexico

Netherlands | Norway | Poland | Portugal | Puerto Rico | Romania

Serbia | Slovakia | Slovenia | Spain | South Korea | Sweden | Switzerland

land | United States