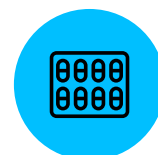
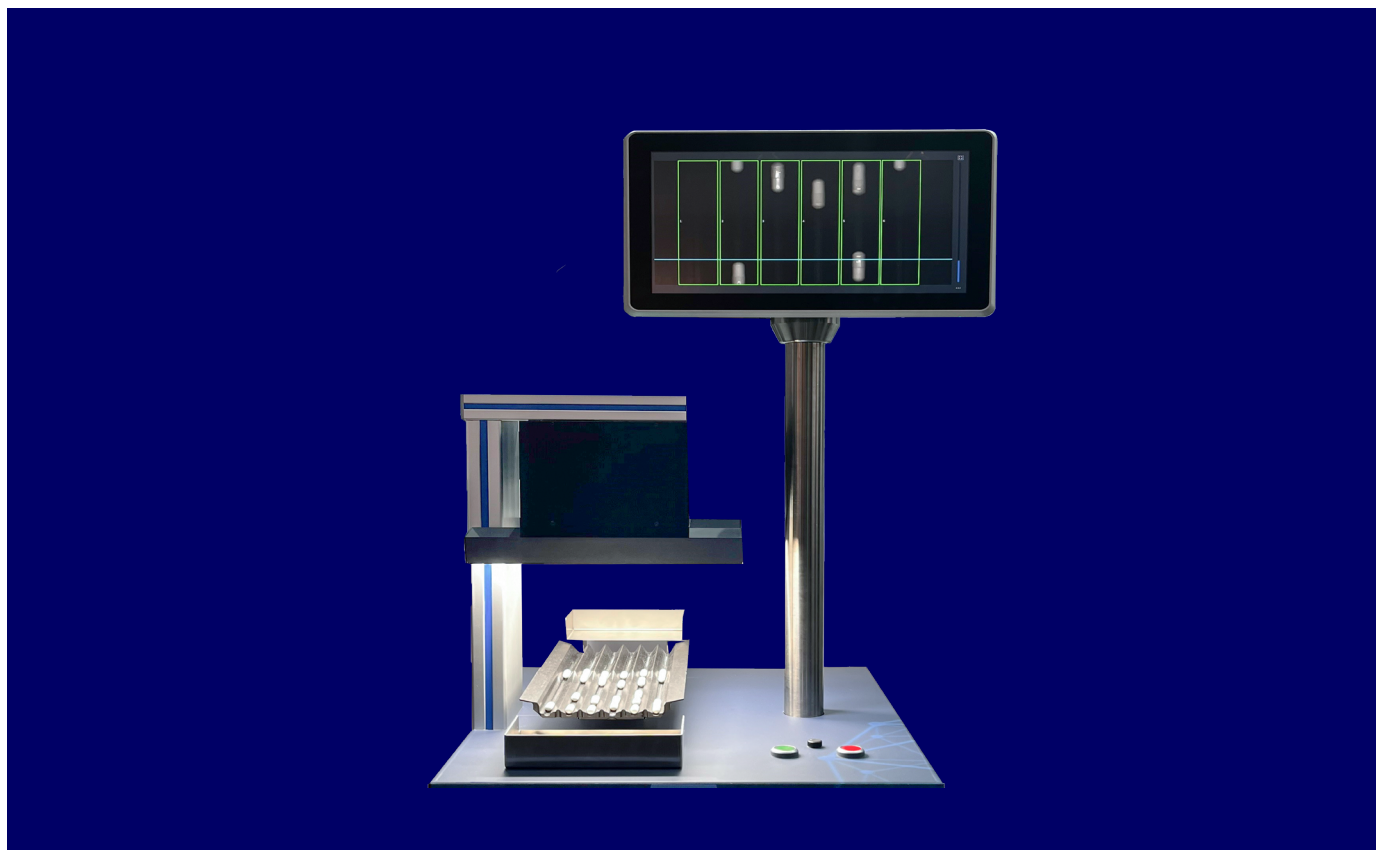



Product & Blister Inspection



SPECTRA Bulk Bulk Inspection



SPECTRA Bulk  was developed for the detection of wrong colour, broken products and foreign matter in pharmaceutical products packaged in bulk. Each product is inspected multiple times and results are carried through to the ejection station.

PRODUCT HIGHLIGHTS

1 million

products per hour



scalable

3

ejection modes

Any questions?



+49 6257 9352 0



info@scanware.de

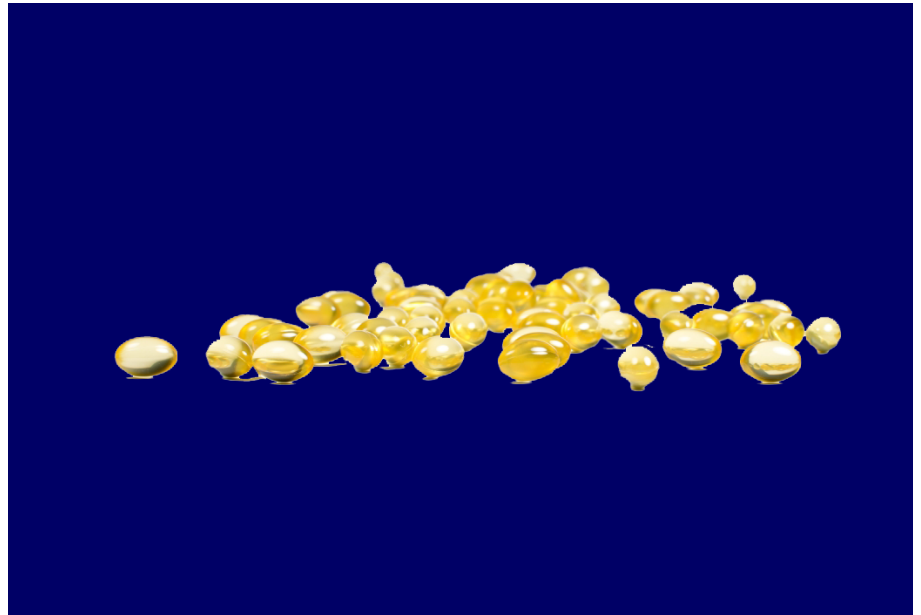


scanware.de



DESCRIPTION

- Criteria: Colour, size, broken product, foreign matter
- The following functions all occur within a single machine stroke: position analysis of individual products, evaluation according to product parameters, location tracking in consecutive shots as well as overall evaluation result and signalling to the machine
- Large machine widths can be inspected
- Can be used on all ETCs with vibratory conveyors and slat counters
- Supported production modes: ejection of individual products, ejection of bottles after filling, and manual removal of bad products
- Can evaluate with constant light or flashing W-LED



APPLICABLE OBJECTS



Bulk of the below products



Tablet



Soft gel capsule



Hard gel capsule



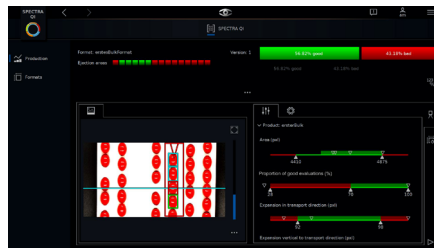
Oblong



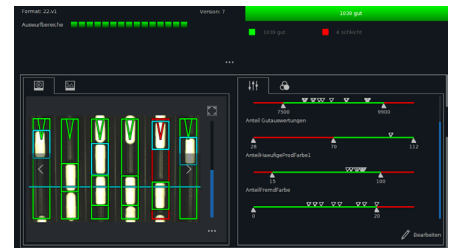
Sugar-coated tablet

ON SITE

With three ejection modes, SPECTRA Bulk **IQ** empowers you to optimise your ejection. Furthermore, the lane-specific results allow an analysis of the feeder to further increase productivity. Finally, as products are traced and evaluated multiple times, any jumping products are still fully analysed and only ejected if they do not meet the product thresholds.



The software offers visualisation of the product parameter thresholds



Via the ejection line, the multiple readings of each product are evaluated together and the result is transmitted in real time

SCANWARE HIGHLIGHTS



Highest security
& failure-safety



Partnership
& Trust



In-house
development



Customisable
to optimise
productivity



User-friendly
& intuitive

