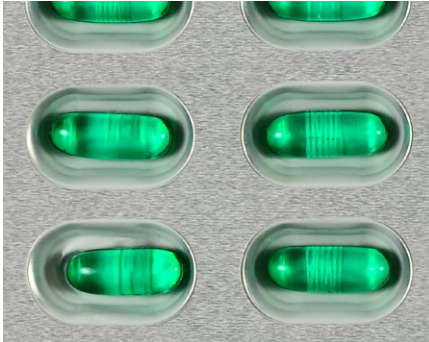


# SYSTEM INFORMATION

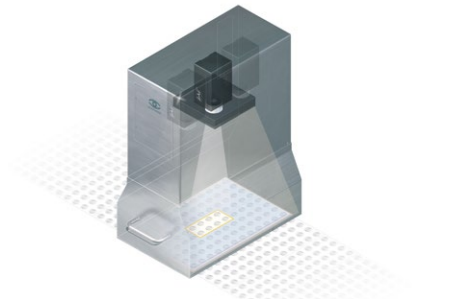


## LYNX-SPECTRA CL Color Product Inspection

### Description

The color inspection system LYNX-SIGNUM CL is used to detect cross-contamination and other errors such as size, position as well as broken products and double fillings. It is the ideal solution for common inspection tasks. For use in complex tasks, soft- and hardware can be upgraded.

Due to the adjustable illumination and highly specialized software, the system offers a lot more than average inspection systems.



### Area of Application

#### Applicable Objects:

- Tablets
- Oblongs
- Sugar-coated tablets
- Hard and soft gel capsules

#### Inspection Criteria:

- Color
- Presence
- Size
- Shape
- Perimeter
- Position
- Broken products
- Overfilling
- Surface defects
- Consecutive errors

### Highlights

- Magnificent speed and encompassing analytical options
- All parameters can be used simultaneously
- Homogenous, reproducible and adjustable illumination – 16 levels available
- Prime hardware and a large software package based on real-time operating system QNX®
- The system can be upgraded to LYNX-SPECTRA HR at any time in case of increasing requirements. That way, specialist requirements can be fulfilled.

## ■ System

The use of the real-time operating system QNX® enables high-speed signal processing and high failure safety.

Security is increased by more advantages of the system:

The modular built enables the expansion for increasing and future requirements. This makes the system future-proof.

The system is fully compliant to 21 CFR Part 11; format versions are saved separately. The memory contains up to 50 images which are the basis for an individual suggestion of parameter settings. This offers a higher level of security than standardized settings that the user needs to adjust according to his inclination. It also offers higher user comfort.



## ■ Hardware

The CameraLink interface enables the safe and low-noise transfer even of large data. Compared to USB and FireWire, CameraLink enables a greater cable length. The evaluation unit offers high performance so all parameters can be used simultaneously at high speed.

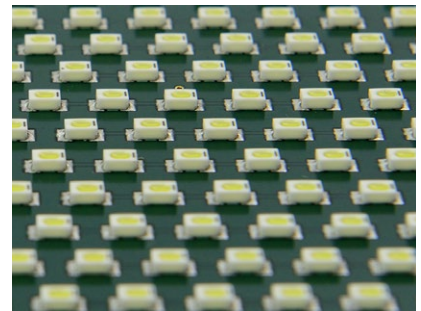
### Evaluation unit

Evaluation unit	19 inch built, 42 TE
Industry PC for frame grabber	Compact PCI Bus Interface
Wide range power supply	95-230 V ~
Standard I/O System	DIO8/16/32/48/64
Interfaces	2 x COM, 3 x USB, 2 x Ethernet, VGA
Hard drive	256 GB SSD
Frame grabber	scanware, for matrix and line cameras in black and white and color



### Illumination

Illumination	scanware, with up to 3,000 LEDs per unit
Illumination adjustment	scanware, 2 x 16 levels*
Illuminant	Nichia SMD-W-LED
Illumination types	Toplight, backlight, sidelight, diffuse light



\* = Toplight and backlight are set separately over two individual channels



## Software

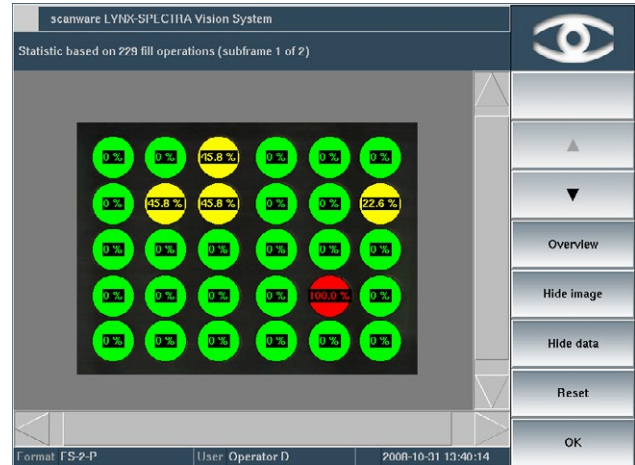
Our medium option others cannot reach. Thanks to using QNX®, the software runs in real-time. All features can be used simultaneously – at high speed.

Some of our extraordinary software features:

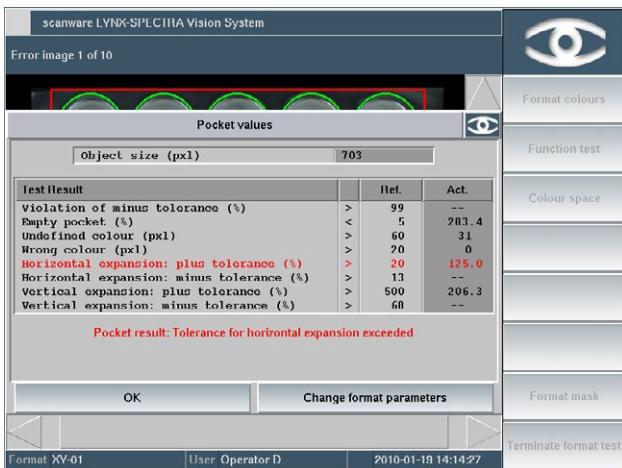
- Documentation of production and format
- Evaluation of pocket and lane feeding
- Partial teach-ins for product color, size and background color enable adapting to lot-specific varieties
- Thorough Audit Trail
- Easy-to-follow guided menu



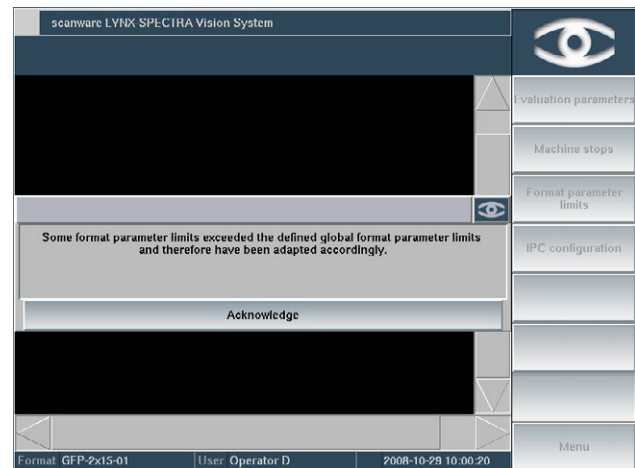
Automation of the teach-in simplifies the process so production can start in minimum time. Object position, blister geometry and product color are recognized automatically. A manual teach-in is also possible.



Feeding statistics for lanes and pockets available for optimising production and error analysis. The visualisation of statistical data enables simple recognition of consecutive errors.



During format testing, pocket-specific values of deviations are displayed. This allows a precise analysis of faulty products.



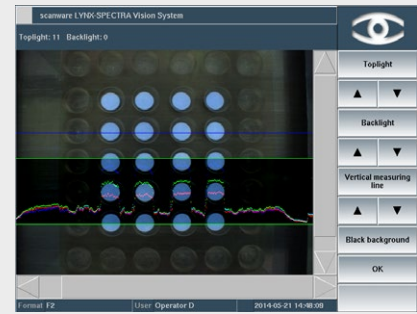
Tolerances can be set on a global level by the administrator. Thus, the user can only operate within these frames when making changes. This increases production security.



## ■ Illumination Adjustment

scanware offers numerous standardized illumination units suitable for every application. Toplight, backlight and sidelight units can be combined to achieve ideal illumination. The use of SMD-W-LEDs offers a long lifetime without any loss in brightness.

The illumination is adjusted to the optimal level using a simple measuring line. Every unit can be adjusted in 16 levels to achieve the ideal contrast between product and background. The settings are saved as part of the format and consequently remain constantly reproducible.



## ■ Technical Data

Camera technology	1CCD, Sony
Camera interface	CameraLink
Camera resolution	1,296 × 966 pixels
Max. number of pictures per minute	1,200
Color resolution	256,000 colors
Objects per image	224
Format storage	>1,000
Number of cameras	1



## ■ The scanware Benefits

- Modular built for a multitude of installation options
- Real-time operating system QNX® for security and speed
- Uniform graphical interface and easy-to-follow menu structure
- Fully 21 CFR Part 11 compliant
- Hard- and software are expandable and upgradable
- Wear-free, electronically controllable scanware W-LED illumination
- Easy to install on all common packaging machinery
- Communication with machine via a VDMA-XML protocol
- Simultaneous use of numerous inspection parameters
- Variety of statistical tools
- Development of special tasks and requirements on your request
- Availability of all parts guaranteed for 10 years
- Service offering solutions and support within 24 hours

<b>LYNX-IMPERA</b>	Line Management
<b>LYNX-SPECTRA</b>	Product Inspection
<b>LYNX-SIGNUM</b>	Code Inspection
<b>LYNX-FOCON</b>	Pore Detection
<b>LYNX-CAPA</b>	Track & Trace Solutions

**scanware electronic GmbH**  
 Darmstädter Straße 9-11  
 D-64404 Bickenbach  
 Telephone +49 6257 9352-0 Fax -22  
 info@scanware.de  
 www.scanware.de

International Distributors:  
 Algeria | Brazil | Canada | China | Costa Rica | Egypt  
 France | Greece | Italy | Morocco | Puerto Rico | Russia  
 South Korea | Spain | Switzerland | Tunisia | United  
 Kingdom | United States

**Quality is visible.**

