


Track & Trace



CAPA MV **QI** Mark & Verify Station



At the Mark & Verify Station CAPA MV , units are marked with production-specific data and the print is verified. The processing and aggregation of serialised data is handled by IMPERA Line Management.

PRODUCT HIGHLIGHTS

300

folding boxes
per minute

PLC & rejection verification

integrated

In-house

development of
hardware and software

Any questions?



+49 6257 9352 0



info@scanware.de



scanware.de



DESCRIPTION

- Criteria: 1D and 2D codes e.g. Code 128, DataMatrix and plain text such as lot, expiry date, GTIN and serial numbers
- Implemented codes: GS1, IFA, CIP 13, ITS, Bollini IPZS, Royal Vignette Belge and China E-Coding
- Box sizes: A = 15 - 220 mm, B = 20 - 120 mm, H = 60 - 220 mm
- Fixed or adjustable height of folding box feed: 800 - 1,050 mm
- The machine control of all components is performed by a PLC
- Compatible to printers by Wolke, REA, Bluhm and Domino. Other printers, e.g. DoD can be implemented upon request.



APPLICABLE OBJECTS



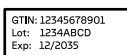
Folding box



Pharma-code



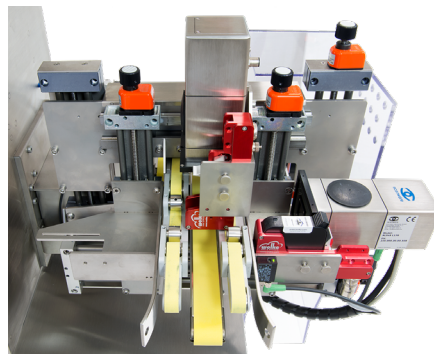
DataMatrix



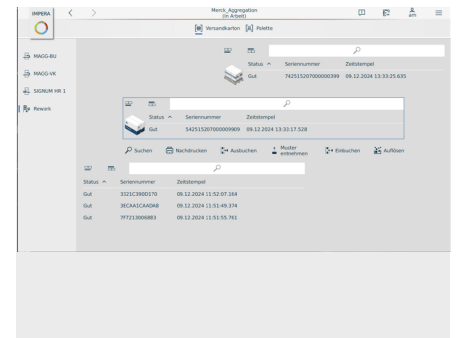
Plain text

ON SITE

Tool-free adjustment to individual folding box size on site. The sensors ascertain precise folding box print, print verification as well as rejection verification. Rejection can occur pneumatically or via a mechanical turnout.



High-precision placement of print thanks to precise folding box guidance



Handling of data and serialisation by IMPERA

SCANWARE HIGHLIGHTS



Highest security
& failure-safety



Partnership
& Trust



In-house
development



Customisable
to optimise
productivity



User-friendly
& intuitive

